

DATASHEET

Type: **DOUBLE**
Name: Pendant light
ID: PC1294
Designed by: LCM MARIN design studio



Download

Description

Double, a new collection of pendant lights, is based on a shape consisting of two elements made from two different materials – glass and lightweight aluminium. These elements depend on one another to generate a unique and consonant form. The glass globe terminating in a metal ring provides a suggestive effect, with the handle on top alluding to the idea of transporting the light. In the pendant variant, which is available in three different shapes, the upper metal section with wire rope seeks equilibrium in the scattered light and shadows as they pass through the lower metal ring and globe, the latter crafted from multiple layers of molten glass that are carefully scrutinized by the master glassmaker prior to blowing. The luminance of the LED light source is softened by an opal diffuser. By virtue of its scope, the Double collection is ideal for private interiors and works very well in large compositions and colour combinations.



Tech. description

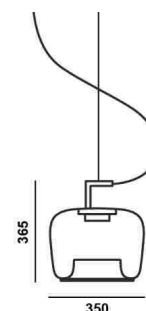
The luminaire consists of a glass shade, metal frame with integrated LED module, metal caps, metal printout on the lower edge of the screen, supply cable and steel cable. The luminaire is suspended from the ceiling canopy by means of a supporting steel cable.

Colours options: https://brokis.sharepoint.com/:b/s/brokis_sp/Ebd85R6HFNJLuLZqmrhMvMBdX_FqRy9scmzBOndcnV6g

CONSTRUCTION SPECIFICATION

Weight: 6 kg
Construction material: glass, metal
Cord length [mm]: 2,200 mm
Mounting: Ceiling
Environment: Indoor

DIMENSIONS [mm]



ELECTRICAL SPECIFICATION

Input voltage [V]: 100 - 240 V
Frequency [Hz]: 50-60 Hz
Max. power [W]: 9.4 W
Coverage IP: 20
Socket: LED module
Light source: -
Energy class: E

CERTIFICATIONS



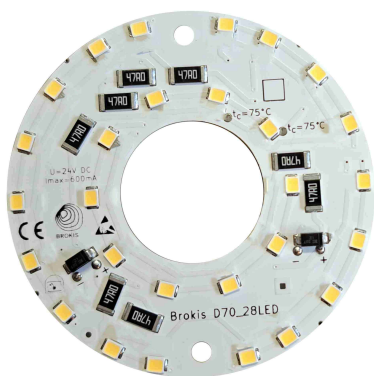
BROKIS®

BROKIS S.R.O.
ŠPANILOVA 1315/25
163 00 PRAHA 6 - ŘEPY
CZECH REPUBLIC

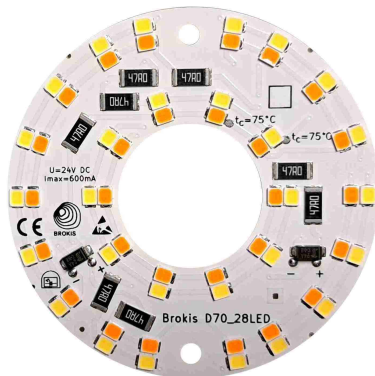
ORG ID 64940799
VAT ID CZ64940799
C 42174 MĚSTSKÝ SOUD
V PRAZE

TEL +420 567 211 517
TECHNICAL@BROKIS.CZ
INFO@BROKIS.CZ
WWW.BROKIS.CZ

2024_02
PAGE 1



CM14897



CM17106

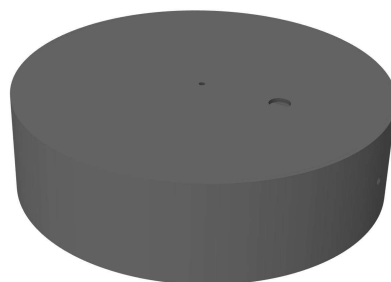
Type	LED module
Lamp wattage [W]	9.4 W
Input voltage [V]	24 VDC
Energy class	E
Flux [lm]	1060 lm
Light colour [K]	2700 K
CRI	90+
Dimmable	yes

Type	LED module
Lamp wattage [W]	9.4 W
Input voltage [V]	24 VDC
Energy class	E
Flux [lm]	763-1233 lm
Light colour [K]	1800-6500 K
CRI	90+
Dimmable	yes



INNER FIXTURE

Dimensions O x w [mm] 180 x 50 mm
Weight [kg] 1.3 kg
Material metal



Drawing

Hole placement

